

RIGOL

Ultra Sigma Screenshot Function Supports Newly Added Models

When **RIGOL** released new models or product series, you may encounter a problem: The convenient screenshot function of the Ultra Sigma software is not available for the newly released products. The PC software such as Ultra Sigma generally has a fixed maintenance period, and after the software version runs stable, the maintenance period for the version update lasts longer. Therefore, for the convenience of users, new models are supported by the screenshot function of **RIGOL**'s Ultra Sigma. The detailed steps are as follows:

1. Download the latest version of Ultra Sigma installation package from **RIGOL** official website (www.rigol.com). Then, install the software properly according to the installation wizard. If you have installed the software, ignore this step.

2. Download the screenshot command files (*.pscmd) that you require from **RIGOL** official website.

Note: When new product models or series are released, **RIGOL** will release the relevant screenshot command files synchronously on its official website, such as "RSA.pcsmd" for the RSA series real-time spectrum analyzers.

3. Start up Ultra Sigma to enter its main interface, as shown in Figure 1.

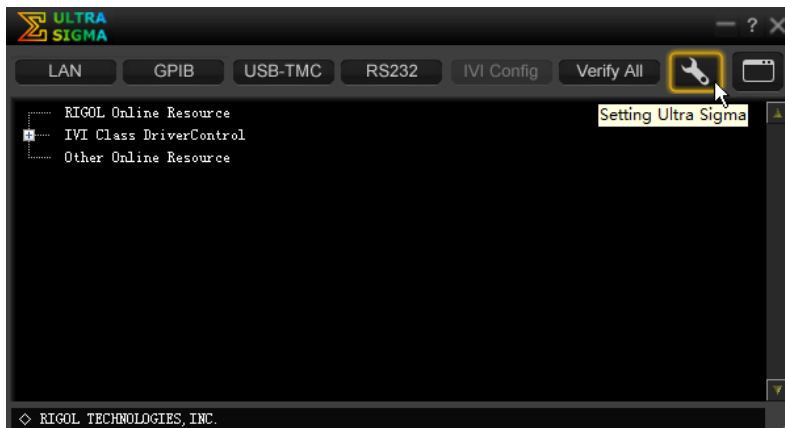


Figure 1 Main Interface of Ultra Sigma

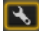
4. Click the icon  to enter the setting interface of Ultra Sigma, as shown in Figure 2.



Figure 2 Setting Interface of Ultra Sigma

5. Click **Instrument Print Screen** to enter the interface as shown in Figure 3.

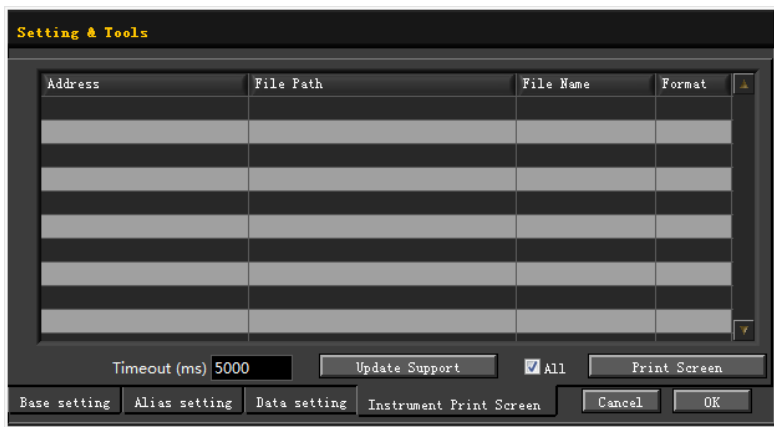


Figure 3 Model Update Support Interface

- Click **Update Support**, and then the file selection window "Select Print Screen CMD file" is displayed, as shown in Figure 4. Then, select the desired downloaded screenshot command file (*.pscmd). Click **OK** to update the screenshot command.

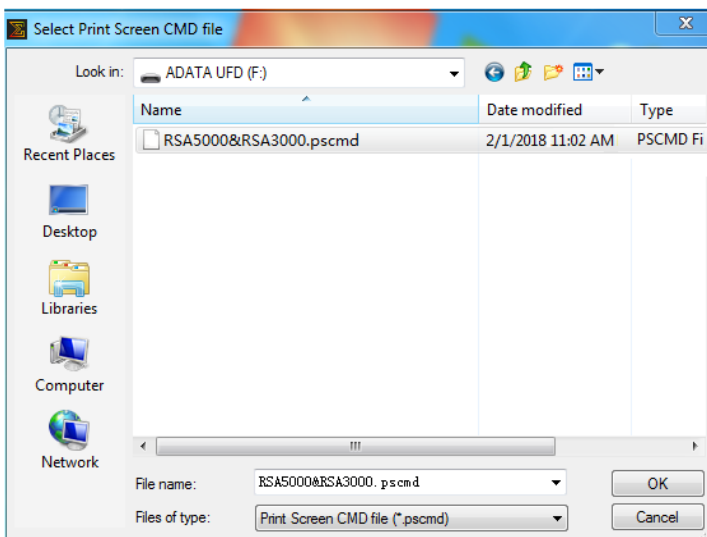


Figure 4 File Selection Window

7. If the screenshot command is updated successfully, then a prompt message as shown in Figure 5 is displayed. Click to complete the update.

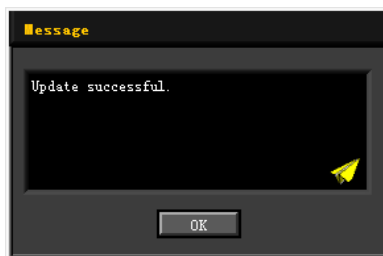


Figure 5 Prompt Message for Update Success

If the screenshot command file type error occurs, (e.g. if it is not a *.pscmd file), then a prompt message as shown in Figure 6 is displayed. Click . Then, download a right screenshot command file from **RIGOL** official website or select a proper screenshot command file type to update.

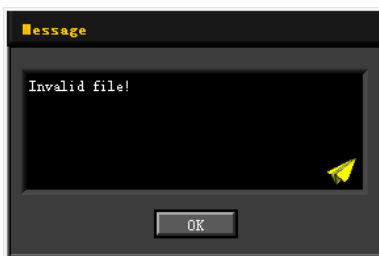


Figure 6 Prompt Message for Invalid File

If the screenshot command file data error occurs, then a prompt message as shown in Figure 7 is displayed. Click . Then, download a right screenshot command file from **RIGOL** official website for update.

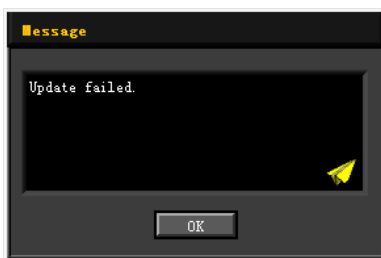


Figure 7 Prompt Message for Update Failure