



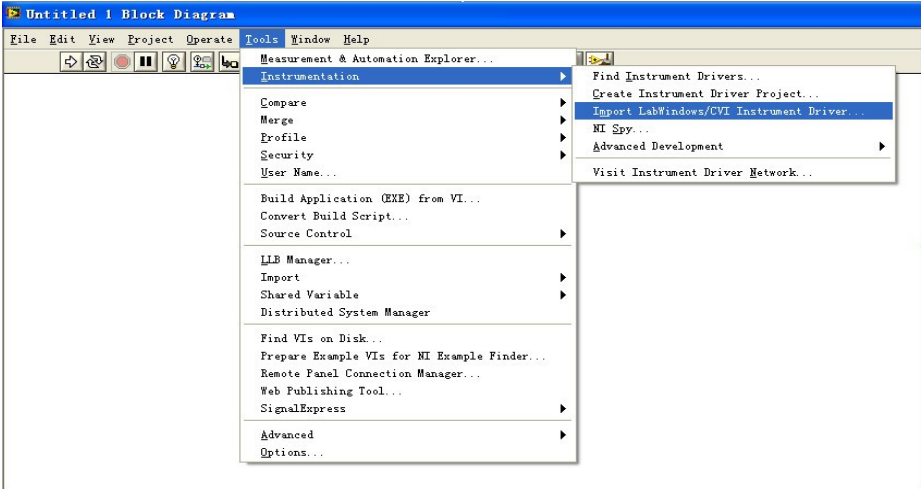
Adding an IVI Driver to LabVIEW

*Date:*03.25.2013

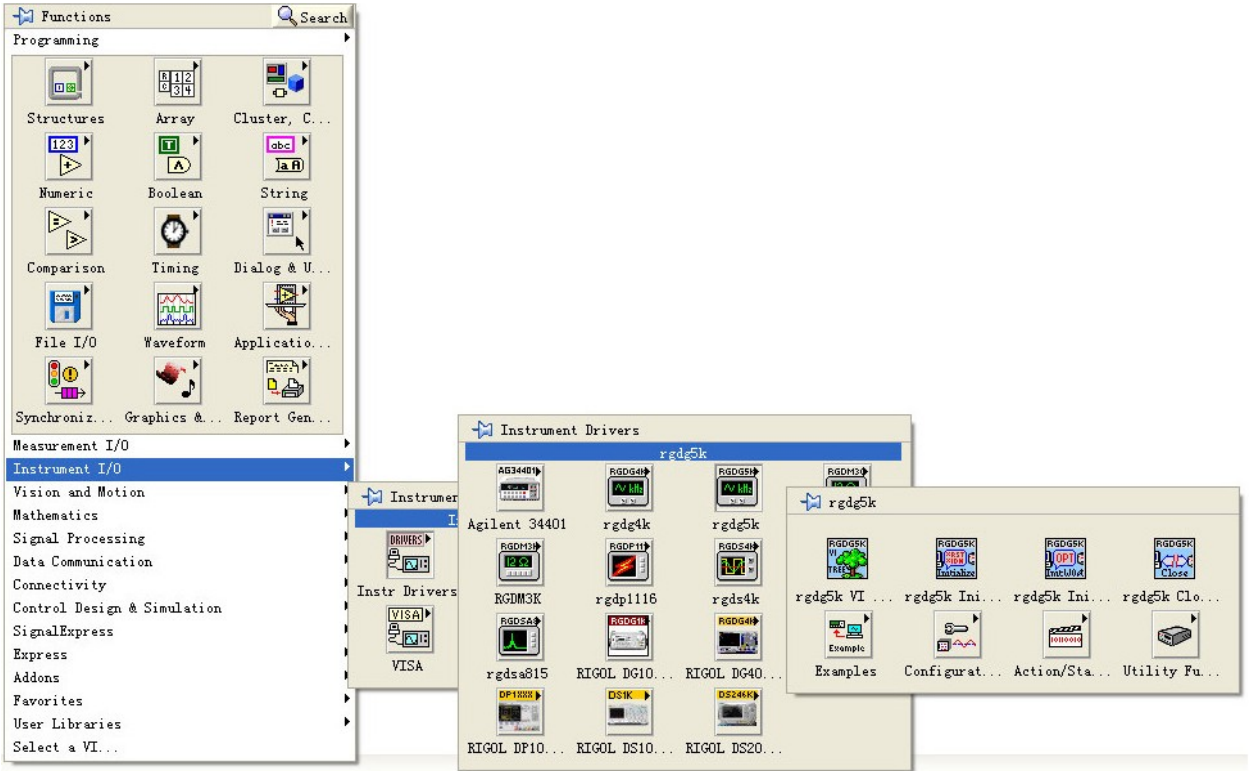
Solution: IVI Drivers can be used in LabVIEW to ease programming.

Here are the steps to install the IVI driver and where to find the instrument driver icons in the functions palette.

1. Download the driver. This should install to:
C:\Program Files\IVI Foundation\IVI\Drivers
2. Start LabVIEW
3. Open a new VI
4. Go to Tools > Instrumentation > Import LabWindows/CVI Instrument driver



5. You can now find the instrument specific Vis in the Instrument IO function palette





Headquarters

RIGOL TECHNOLOGIES, INC.

No.156,Cai He Village,

Sha He Town,

Chang Ping District, Beijing,

102206 P.R.China

Tel:+86-10-80706688

Fax:+86-10-80705070

Email: support@rigol.com

USA

RIGOL TECHNOLOGIES,USA INC.

7401 First Place, Suite N

Oakwood Village

OH 44164, USA

Toll free: 877-4-RIGOL-1

Office: (440) 232-4488

Fax: (216)-754-8107

Email: info@rigol.com

EUROPE

RIGOL TECHNOLOGIES GmbH

Lindbergh str. 4

82178 Puchheim

Germany

Tel: 0049- 89/89418950

Email: info-europe@rigoltech.com