

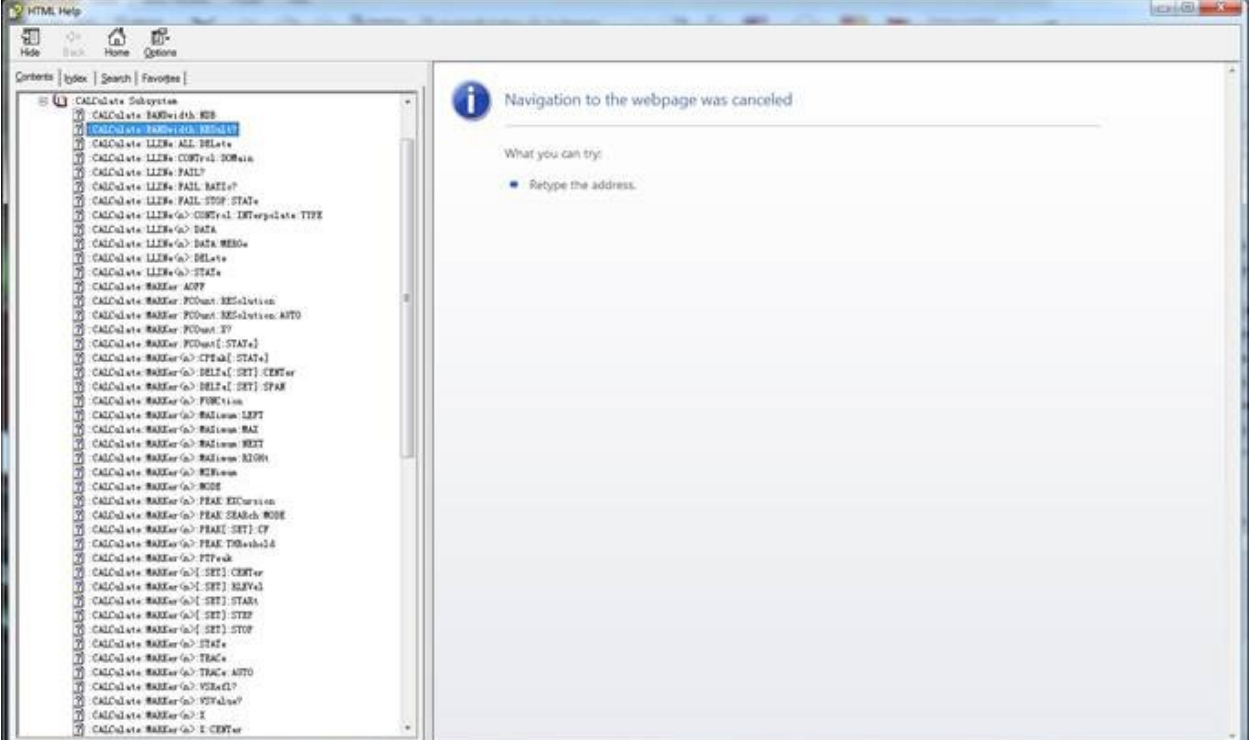


Opening a help file (*.chm): Navigation to web page cancelled

Date:08.27.2012

Solution: Many Rigol instruments include files that are Compiled HTML files. These file types end with the .CHM extension.

There have been reports of an error received upon opening a file with *.chm extensions... as below:





From the following Microsoft forum:

http://answers.microsoft.com/en-us/windows/forum/windows_7-files/while-trying-to-open-chm-files-i-get-an/81e2a82a-d2f7-44f5-9f6a-9126c8fa91bd?auth=1

If you are sure that the help documentation is from a trusted source, try and open it by following the below steps:

- a. Right-click the CHM file and click “Properties”.
- b. In the “General” tab of the “Properties” dialog box, click the “Unblock” button under “Security” at the bottom.
- c. Click “Apply” and “OK” to save the settings.

Try opening the .CHM files and check if that fixes the issue.