



Title

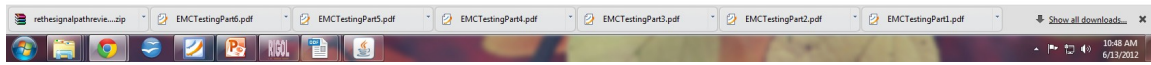
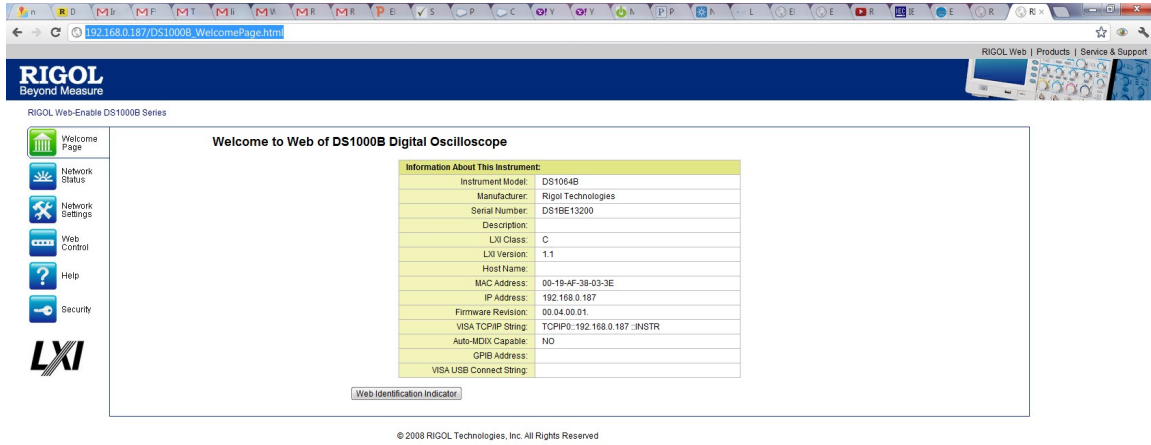
Date:06.13.2012

Solution: Here are some helpful tips when using the on-board webpage for the DS1000B scopes.

- 1) Connect the instrument to the network you are interested in using.
- 2) Configure the instrument for LAN communications. This can be configured by pressing Utility > IO Setting > LAN set on the front panel of the instrument.
- 3) Press the multi-function knob labeled “Intensity” to toggle the menu items in the LAN Configuration menu.
- 4) You can now read off the IP Address.
- 5) Now, open a browser window on the controlling computer.
- 6) Enter the IP address in the browser window.



7) You should see the following:



8) Select the Web Control menu option on the left side of the screen.

NOTE: Make sure your system is running a compatible Java version and that your browser will allow pop-ups.

rigolna.com

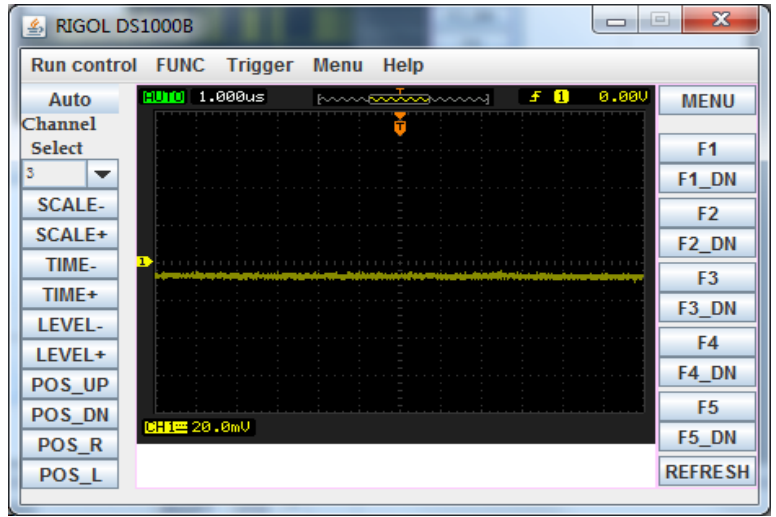
Rigol Technologies USA, Inc.
Phone/Fax: 440-232-4488

Toll Free: 877-4-RIGOL-1

7401 First Place, Ste. N Oakwood Village, OH 44146 USA



9) The following screen will appear:

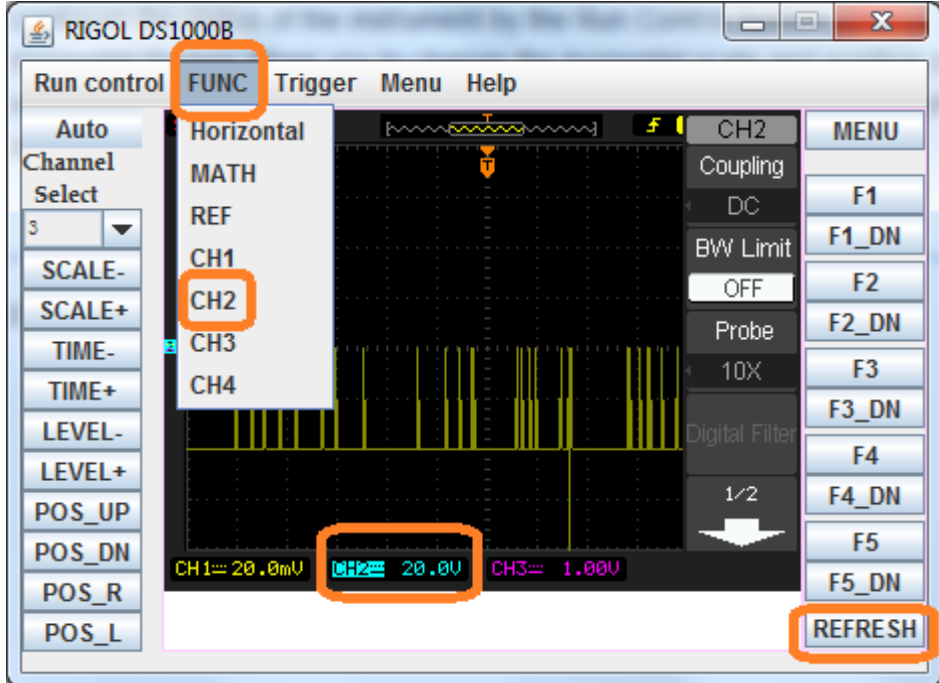




10) Connect the scope to your signal of interest.

11) To manipulate individual channels,

- Select FUNC
- Select the channel of interest
- Press Refresh and be sure that the channel number in the WebControl window matches the channel you have selected. If not, select FUNC, select the channel, and press Refresh again.
- Refresh will retrieve the latest display of the scope.



NOTE: CH2 is highlighted on the display after we selected it in FUNC and REFRESHED the web page display.