

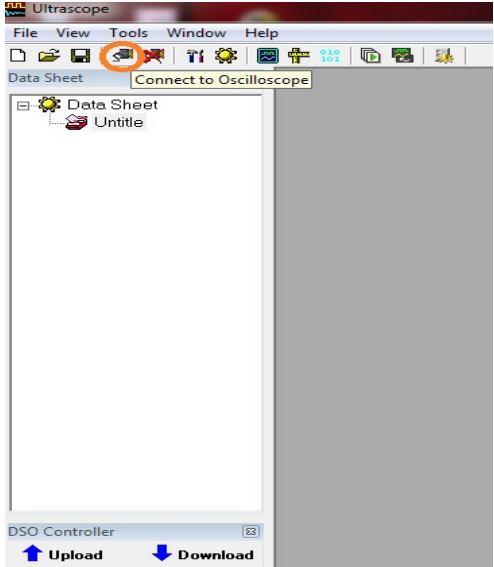


Ultrascope for the DS1000E series: Data Return

Date:09/12/2011

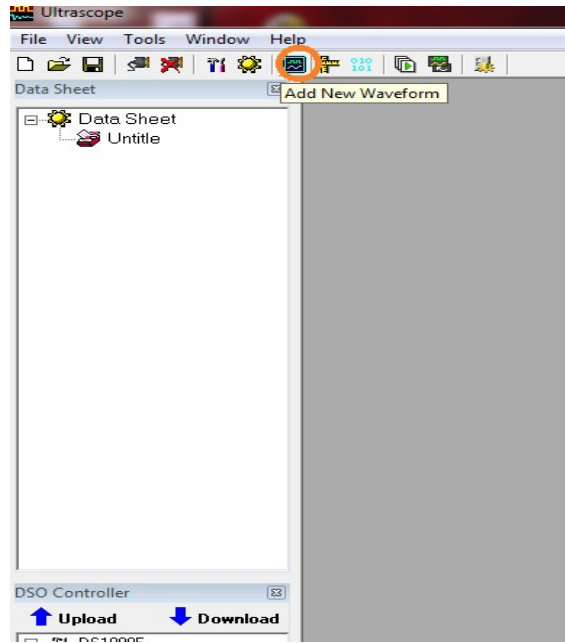
Solution: This FAQ covers how to return data from Ultrascope.

- 1) Connect the oscilloscope to a power cord and turn instrument on.
- 2) Connect oscilloscope to the controlling PC using the USB cable.
- 3) Start Ultrascope
- 4) Connect to the instrument by pressing the connect button on the upper menu bar of the application.





5) To download Bitmaps, select the Waveform icon on the menu bar.

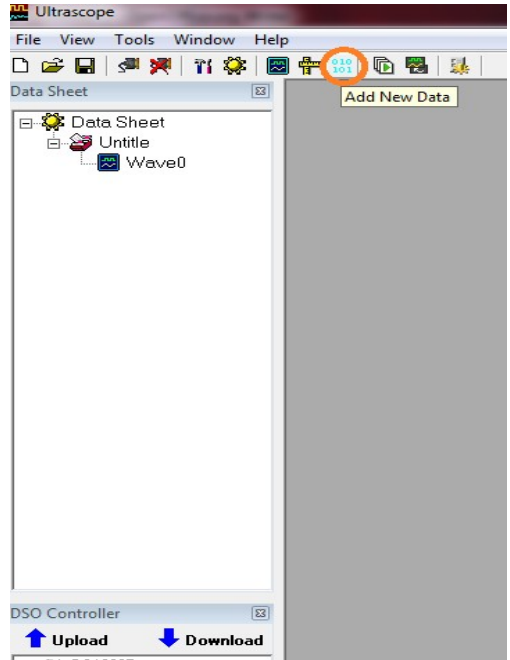


6) When the waveform window appears, you can refresh the view by pressing the refresh button.

7) To save the bitmap, press the Export key and save the file onto your PC.



8) To save CSV (Microsoft Excel) or Text files, press the add new data menu button.



9) Press Refresh to update, and then select Export to select the file type and location to save to.