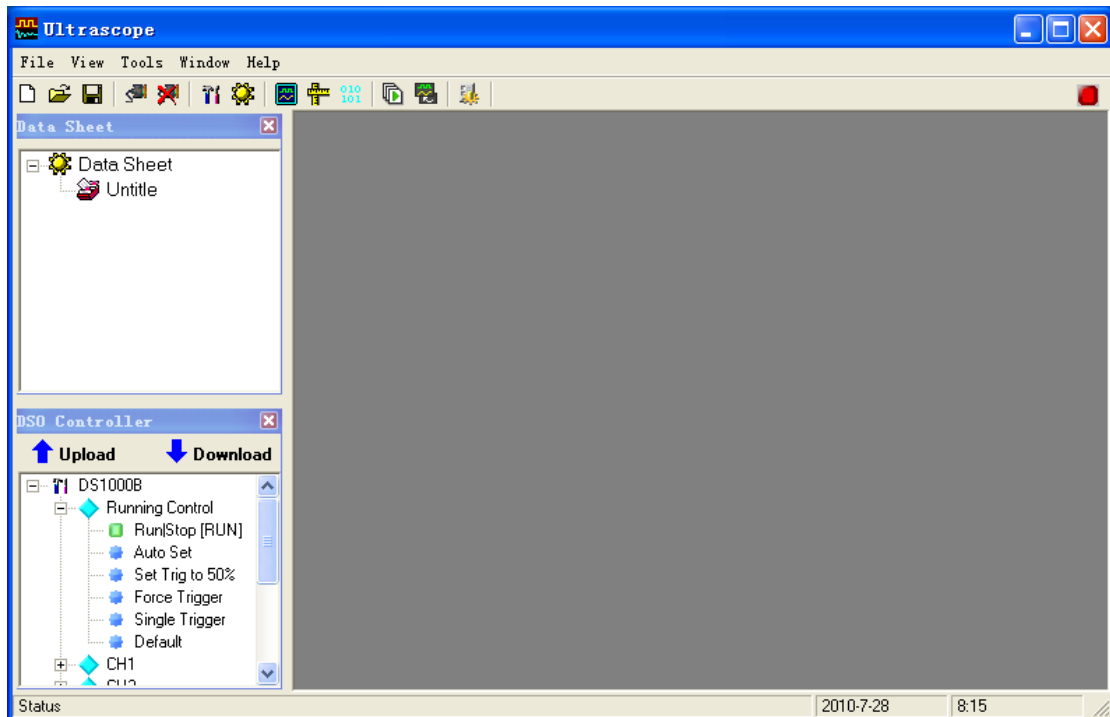
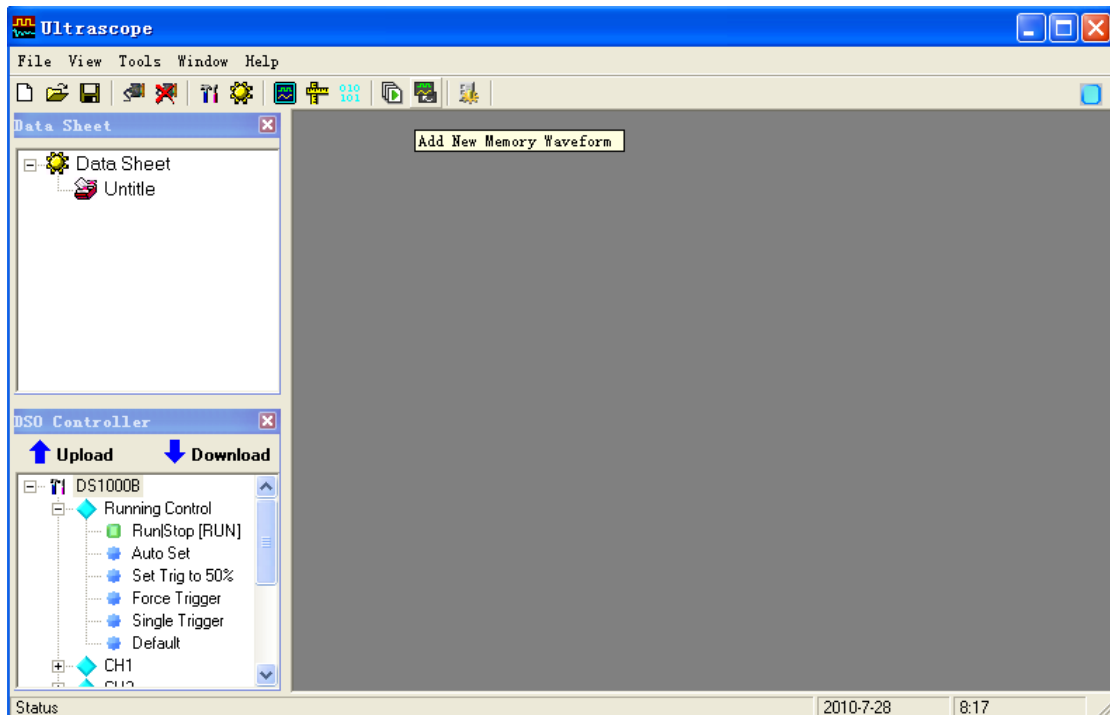


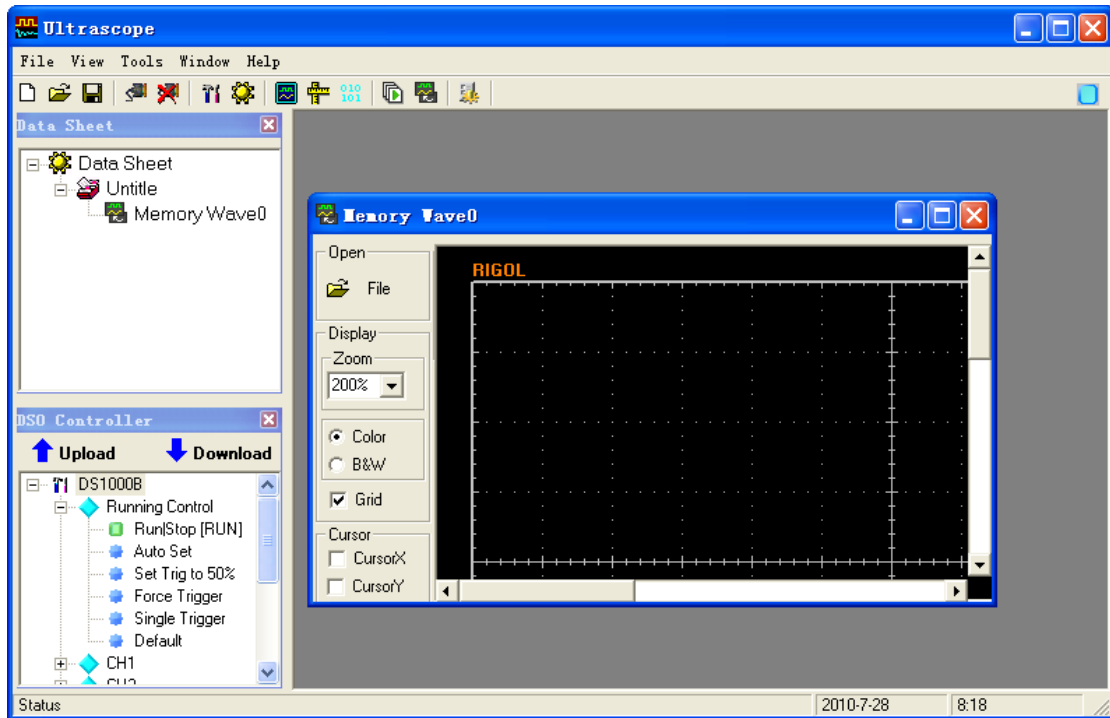
How to open the .wfm file?

1. Open the software of UltraScope, we use the UltraScope for DS1000B as an example.

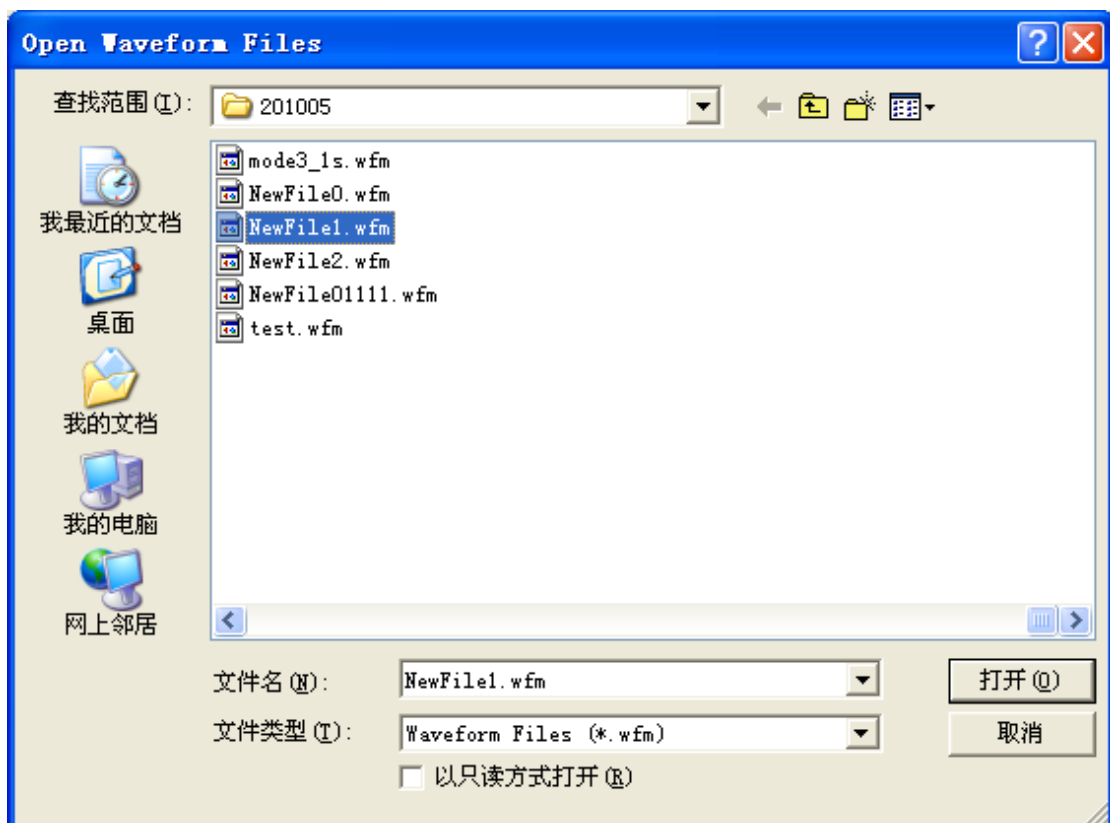


2. Click the icon of "Add new memory waveform".

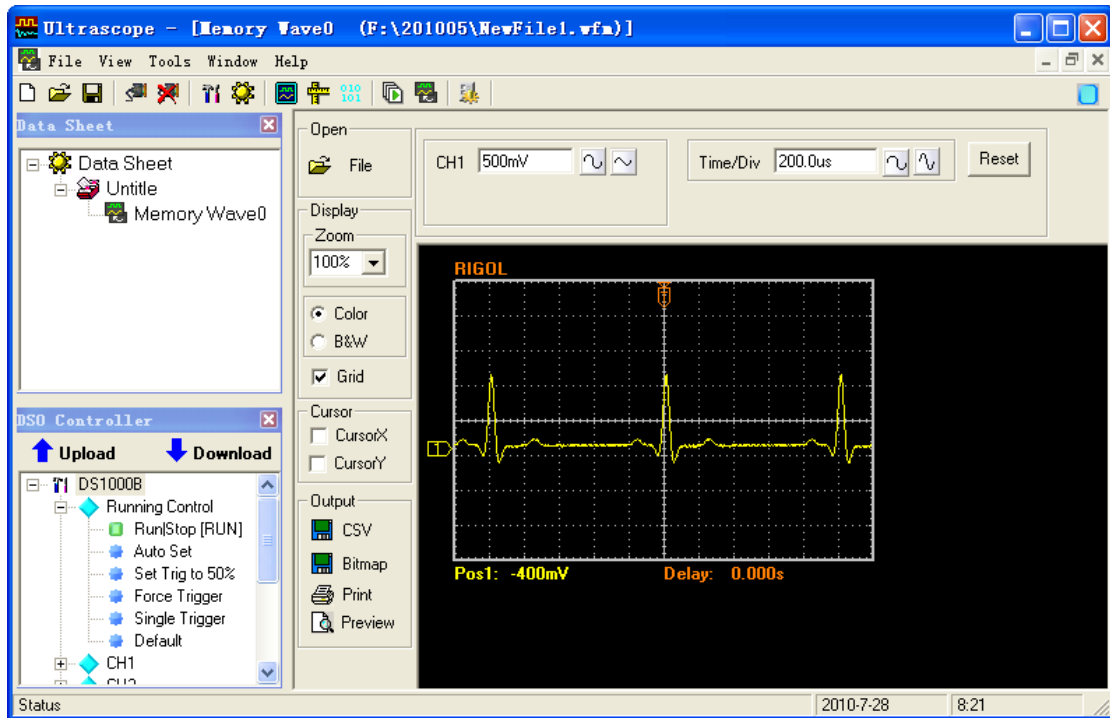




3. Click the File button in the File, and choose the .wfm file you want to open.



4. OK, you can observe the .wfm file right now.



Yuwei Peng
Application Engineer
RIGOL
Email: pengyuwei@rigol.com